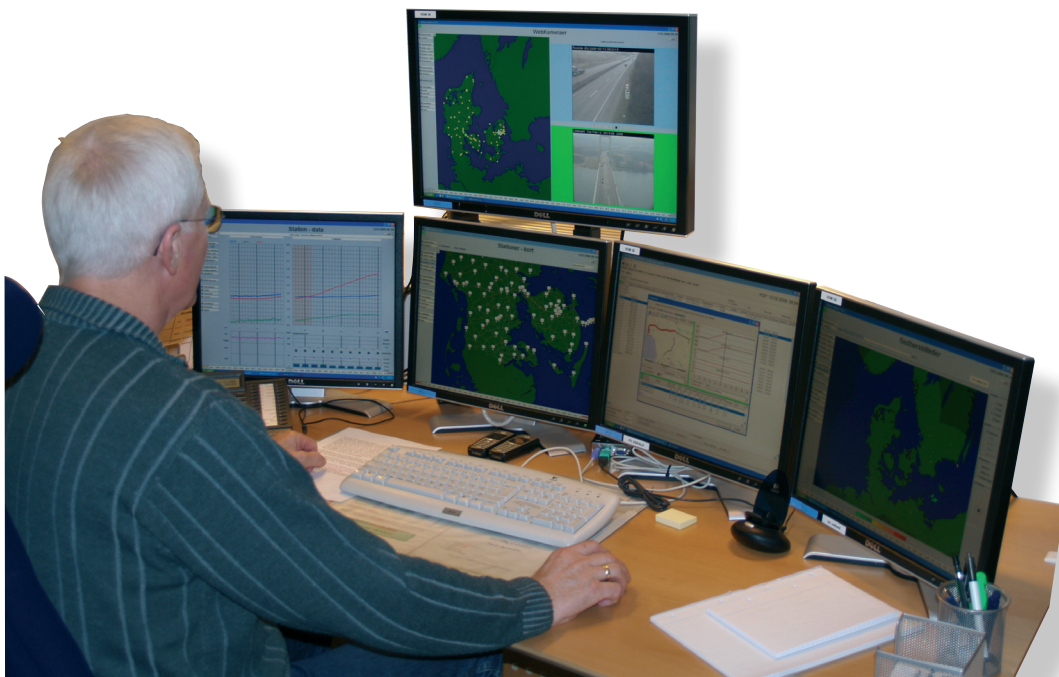


VINTERMAN LIGHT

VINTERMAN Light contains functions for monitoring, registration and follow-up on winter road maintenance tasks.

The system does not require any operation during the call-out and may be left unattended all season long.

Vehicles equipped with data collection automatically send complete documentation for all tasks completed, while data from vehicles without the data collection option may be entered manually.



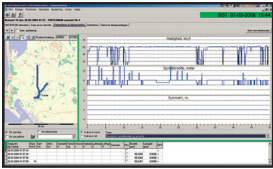
– de-icing of roads!

VINTERMAN LIGHT

Functions:

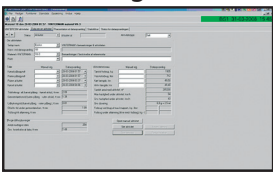
The Danish Road Directorate in cooperation with Epoke® A/S has developed VINTERMAN Light. VINTERMAN Light does not require user input during the call-out period. VINTERMAN Light contains functionality within the following fields:

Data collection:



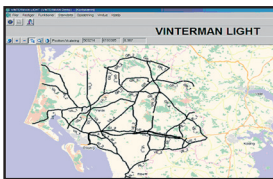
Over the past few years Epoke® A/S has offered solutions with GPS-equipment and data collection – a great advance, as it enables the obtainment of good and detailed documentation of all work completed. Data collection from salt spreaders is possible by means of a memory card, which needs to be emptied by downloading the data into the office computer on a regular basis, or by means of on-line data acquisition, which uses the GSM/GPRS network for data transfer during the call-out.

Manual registration:



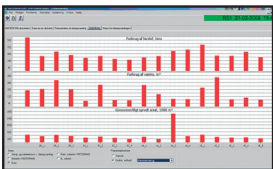
In VINTERMAN Light the data may also be entered manually. The activities are created based on the master data for the individual road authority (routes, vehicles, spreaders etc.) Relevant routes and vehicles are selected from a list, whereupon information from driving records such as salt consumption, completion time etc. is entered. This option is used for the registering of consumption on routes without data collection, or in case the data collection function is out of order.

Maps:



VINTERMAN Light features a digital map system from TeleAtlas. In this way it is possible for the responsible operations manager to gain a quick overview of the winter road activities within his geographical area. In order to follow a specific vehicle during the call-out, the vehicle must be equipped with a GPS-receiver and on-line data transmission. Epoke® A/S automatically supports the transfer of data into VINTERMAN Light.

Statistics:



VINTERMAN Light enables the print out of activity lists as well as various types of statistics. Furthermore, the system holds the option of creating a number of material accounts by means of which the consumption may be divided into the types desired. Each spreader may have two accounts assigned, thus enabling automatic registration of the consumption, for example, by establishing a salt account and a liquid solution account. VINTERMAN Light is capable of generating statistics, which describe the seasonal activity level and consumption of the road authority in question.

VINTERMAN Light system requirements:

VINTERMAN Light may be executed on a stand-alone computer or as a multi-user solution in a network. A multi-user solution requires the database to be stored in a NT 4.0 or Windows 2000 based server. In both cases, VINTERMAN Light uses the database called Interbase version 6.0 from Borland. A VINTERMAN Light pc must be Pentium-based with Windows 2000 or a newer version and must feature a screen resolution

of minimum 1024*768 dots. In practice, minimum requirements for a computer used for VINTERMAN Light are: a 17" screen, processor min. 2.0 GHz (2.8 GHz recommended), DVD-ROM, min. 1 GB RAM and 1 GB free disk space. On-line data acquisition normally also requires a modem and a stand-alone computer.



Epoke® A/S
Vejenvej 50, Askov
DK-6600 Vejen
Tel. +45 76 96 22 00
Fax +45 75 36 38 67
epoke@epoke.dk
www.epoke.dk



In order to maintain the high and uniform product standard Epoke® A/S has been certified by Lloyd's register to ISO 9001:2008.
TLG B-3 approval
GS approval
E1 approval
RoHS directive
WEEE directive

